

SeeHawk® Touch

NETWORK TESTING SOFTWARE



Intuitive Wireless Network Testing and Reporting Software on an Android™ Tablet

Streamline testing of cellular, WiFi, and critical communications networks with this intuitive data collection and reporting software for use with PCTEL® scanning receivers. Ideal for in-building walk testing using path-based or grid-based methods, it also offers easy-to-use tools for outdoor testing, BDA commissioning, and troubleshooting.

SeeHawk Touch

PRODUCT FEATURES

- Access to advanced PCTEL scanning receiver features such as 4G/5G Dynamic Spectrum Sharing (DSS), Layer 3 messages, and LTE MIMO measurements
- Simultaneous data collection across multiple bands and technologies, including cellular, WiFi, public safety, and private radio
- Automated grid-based in-building network testing and reporting
- Automated BDA commissioning testing and reporting
- Automated public safety radio uplink testing with SeeHawk™ Monitor system
- Easy-to-use troubleshooting and equipment room testing tools
- Integration with SeeHawk™ Central cloud reporting and automation platform
- Integration with 3rd-party network design and post-processing tools
- OpenStreetMaps® support

Gflex®, HBflex™ and IBflex® scanning receivers connect via Bluetooth® or USB. MXflex® and other scanners connect via USB.

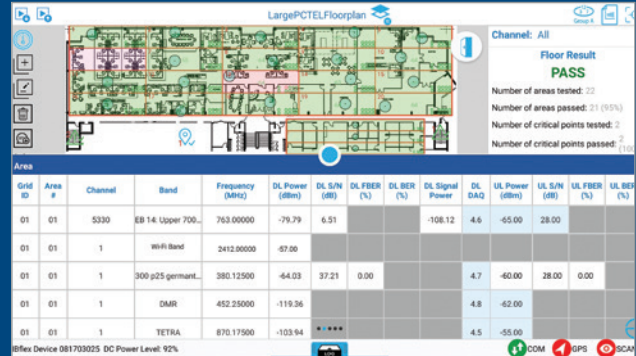
APPLICATIONS

- 5G network deployment and optimization
- Indoor/outdoor walk testing
- Public safety radio uplink and downlink coverage testing
- Drive testing
- Troubleshooting and optimization
- DAS, BDA, and small cell commissioning
- Building and FCC code compliance

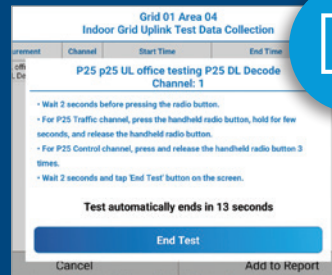


GRID-BASED TESTING AND REPORTING

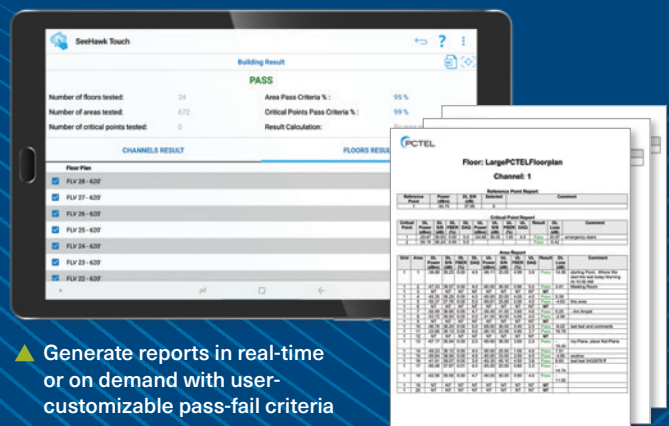
for Critical Communications, Cellular, and WiFi Networks



- ▲ Test coverage, signal quality and noise floor across all channels, bands and technologies in a single tap.



- ▲ Uplink testing automatically synchronizes with measurements collected at the radio by station by SeeHawk Monitor system or uplink test kit.

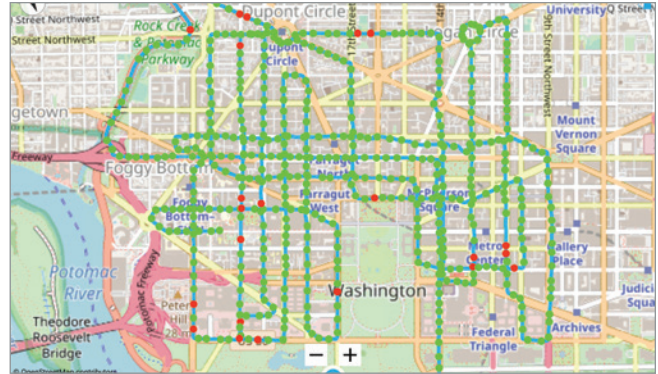


- ▲ Generate reports in real-time or on demand with user-customizable pass-fail criteria

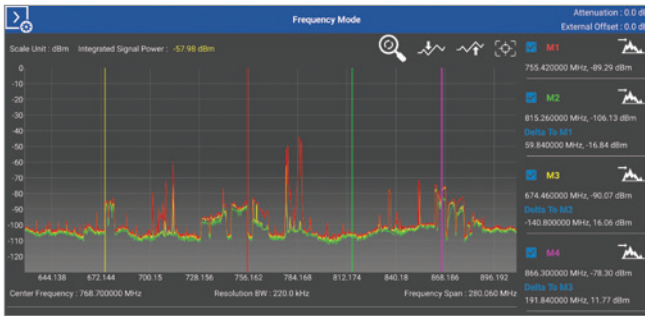
Efficient In-Building and Outdoor Testing



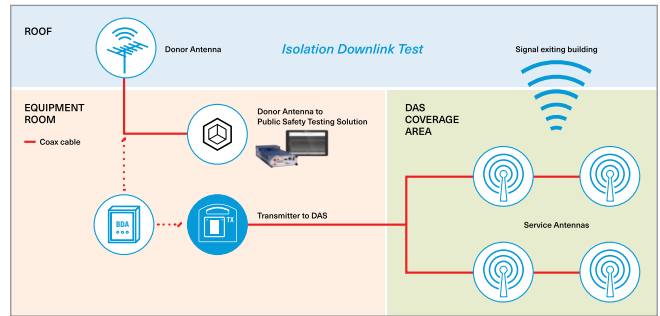
▲ **Walk Testing**
Supports automated uplink testing with SeeHawk *Monitor* system



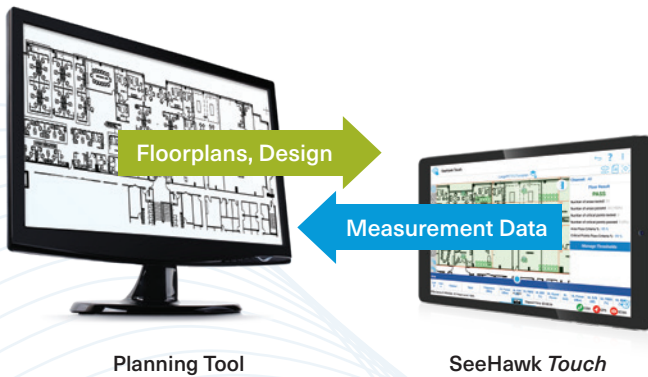
▲ **Drive Testing**
Supports automated uplink testing with SeeHawk *Monitor* system



▲ **Troubleshooting with Spectrum Analysis and Antenna Verification Testing**



▲ **BDA Commissioning Testing and Report Generation**



▲ **Planning tool integration enables you to easily import floor plans and export test data.**



▲ **Also available: SeeHawk® Reports**
Automated drive and walk test reports from SeeHawk *Touch* and SeeHawk *Collect* data

“We are now able to test a site in hours instead of days by collecting data on all of the operator’s frequencies and technologies at once. The SeeHawk *Touch* software’s Antenna Verification Testing feature has drastically reduced our troubleshooting time and helped us to reduce customer complaints. We are also leveraging PCTEL’s solutions for our 5G model tuning, planning, and optimization.”

– *Muhannad AlAbweh, VP Solution Engineering & Services
EEAA Infovista*



PCTEL, Inc.

T: +1 301 515 0036 | pctel.com

Specifications subject to change without notice. PCTEL®, SeeHawk®, Gflex®, HBflex™, IBflex®, and MXflex® are trademarks or registered trademarks of PCTEL, Inc. Android™ is a trademark of Google Inc. Bluetooth® is a registered trademark of Bluetooth SIG. OpenStreetMaps is a trademark of the OpenStreetMap Foundation. PCTEL and SeeHawk software are not endorsed by or affiliated with the OpenStreetMap Foundation. ©2024 PCTEL, Inc. All rights reserved. Rev. H (January 2024)