

Westell® | 406-512 MHz UHF Yagi Antenna



General Information

Westell's UHF Yagi Antennas are made for UHF Public Safety applications. Vertical or horizontal polarization as well as 8 element construction provides excellent performance and durability. Perfect for directional, point-to-point, or point-to-multipoint applications.

Product Highlights

- Low profile with rugged anodized aluminum lightweight construction
- Horizontal or vertical polarization
- High gain for excellent point to point
- DC short lightning protection
- Stainless steel mounting hardware

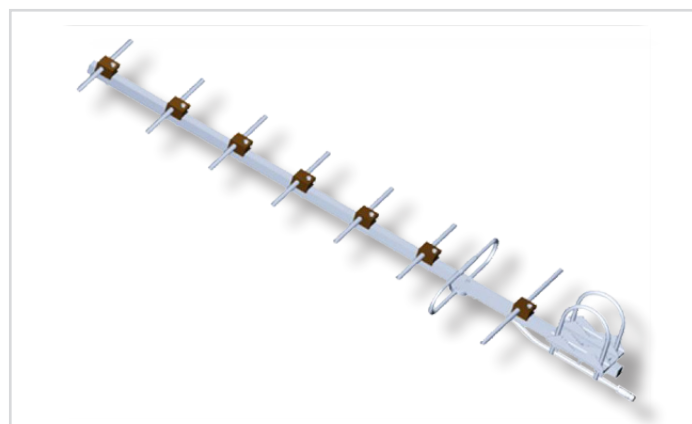
Applications

- 406-512 MHz
- UHF Public Safety
- Directional, point to point or multi-point

Electrical Specifications

Frequency range (MHz)	406-512
Gain (dBi)	11± 1dBi
VSWR	<1.5:1
Polarization	Vertical/horizontal
Horizontal beam width	55 ± 10deg
Vertical beam width	45 ± 5deg
Impedance (Ω)	50
Maximum input power (W)	250
Front-back ratio	≥16dB

Specifications subject to change without notice.



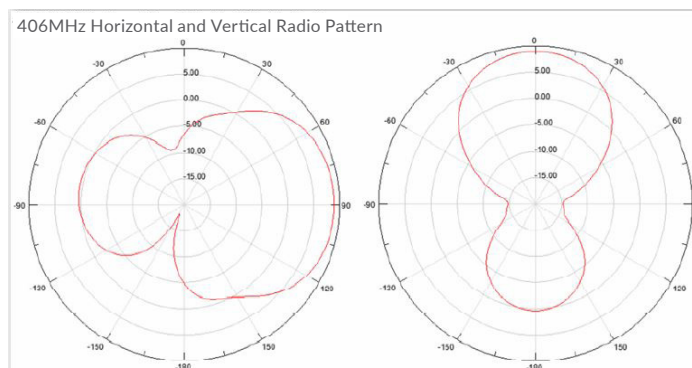
CS03-025-840 406-512 MHz

Ordering information

Part Number	Descriptions
CS03-025-840	Ant-DY-450G11/N(f)

Mechanical Specifications

Cable	Plenum
Connector	N (f)
Lightning protection	Direct ground
Dimensions	54" L x 14" W x 3.15" H
Antenna weight	Antenna body - 7.1lbs/mount kit - 2.2lbs.
Operating temperature	-40° to +70° C
Max wind velocity	~124.5 Mph
Material	Aluminum and copper
Included mounting hardware fits 1.96"-4.13" inch OD pipe	



WESTELL.COM