

Westell® | PCS Yagi Antenna



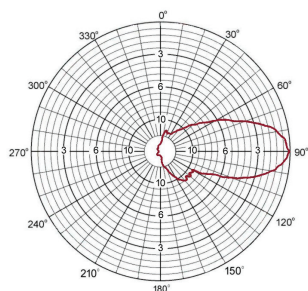
General Information

Westell's 1710-1990 MHz Yagi Antenna is excellent for cellular applications. The eleven-element construction provides exceptional performance and durability and is useful for directional point-to-point, or point-to-multipoint applications.

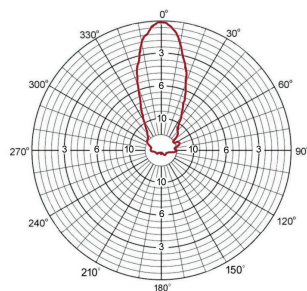
Product Highlights

- 10 dBi gain
- 1710-1990 frequency range
- 11 elements
- Hermetically sealed driven element
- Rugged lightweight design
- Stainless steel hardware

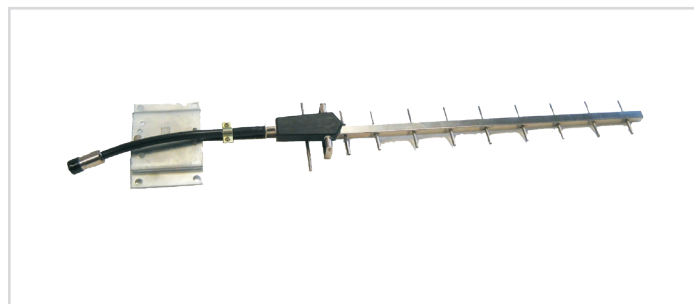
Radiation Patterns



Horizontal



Vertical



1710-1990 MHz Yagi Antenna, 10 dBi

Ordering information

Part Number	Descriptions
CS03-003-021	CSI-AY/1.85-1.99/10D

Electrical Specifications

Gain	10 dBi
VSWR	<1.5:1
Horizontal beamwidth	38°
Vertical beamwidth	36°
Polarization	Vertical/horizontal
Maximum input power	200 Watts
Electrical downtilt	0°
Front-back ratio	>16 dB

Specifications subject to change without notice.

Mechanical Specifications

Number of elements	11
Connector	N-Female
Lightning protection	Direct ground
Rated wind speed	120 mph (193.12 kph)
Dimensions	26.69 x 4.88 x 1.60 in
Antenna weight	1 lb
Mounting hardware	U-Bolt
Included mounting hardware fits 1.18"-2.36" inch OD pipe	



WESTELL.COM