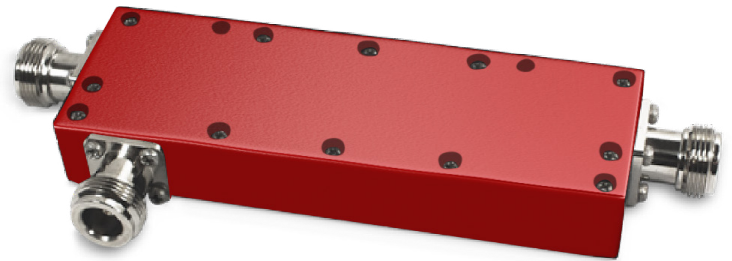


GUARDIAN



TQ-COUP Directional Coupler



FEATURES

- Allows for multiple broadcast antennas
- Ensures adequate signal
- -6 and -10 dB options

A coupler, also known as a tap, is used when placing multiple broadcast antennas in a long line when installing a cell phone signal booster system. This component unevenly distributes the signal coming into and out of the coupler. This allows less signal loss out of one port ensuring that the next broadcast antenna down the line receives adequate signal. The coupler comes in -6 dB and -10 dB options.

Technical Specifications

Model #	TQ-COUP-698-2500-6	TQ-COUP-698-2500-6
Type	-6 dB	-10 dB
Insertion loss	1.7 dB	0.8 dB
Coupling port loss	6 ± 0.6 dB	10 ± 0.8 dB
Directivity	≥ 20 dB	
Frequency range	698 - 2500 MHz	
VSWR	≤ 1.25	
Power Capacity	200W	
Impedance	50 Ω	
Connector Type	N-Female	
Dimension	120 × 40 × 17 mm (Without Connectors)	
Weight	2.26 oz (64 g)	
Operating Temperature	-30° to +65° C	
Color	Red	

Ordering Information

Model	Description	Stock No.
TQ-COUP-698-2500-6	Directional Coupler, 6dB, 698-2500MHz, 200W	3996028
TQ-COUP-698-2500-6	Directional Coupler, 10dB, 698-2500MHz, 200W	3996029